



# Bias Analysis in the High Mountains of Asia (HMA)

Mickaël Lalande

---

PhD Student 2019-2022

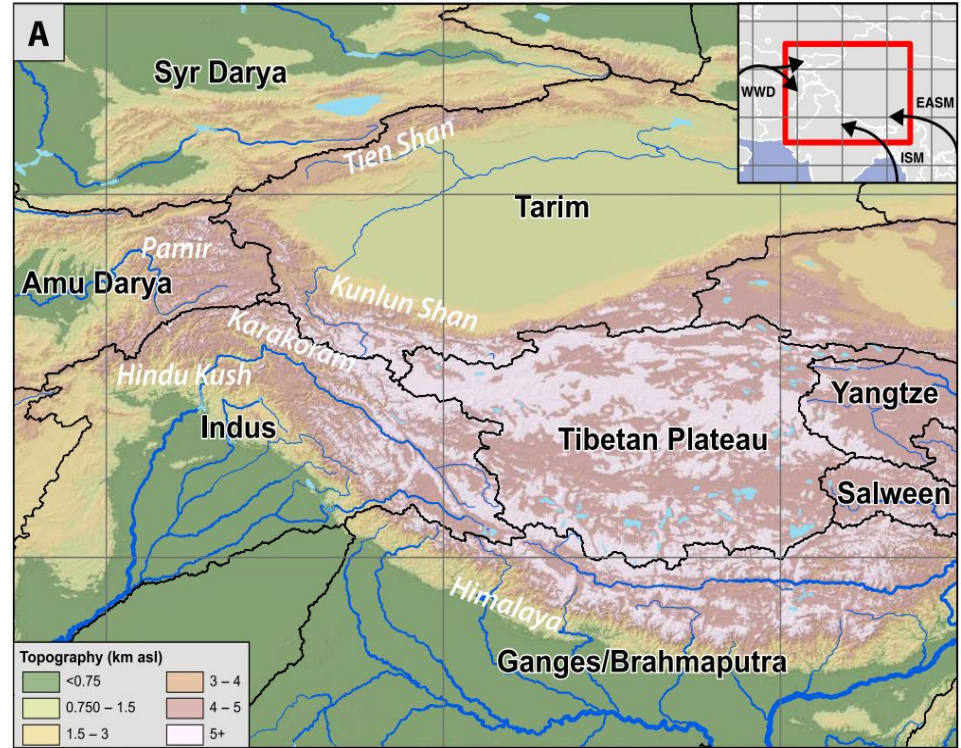
Supervisors : Martin Ménégoz et Gerhard Krinner

Institut des Géosciences de l'Environnement (IGE, Grenoble, France)

Réunion Utilisateurs LMDZ — 05/06/2020

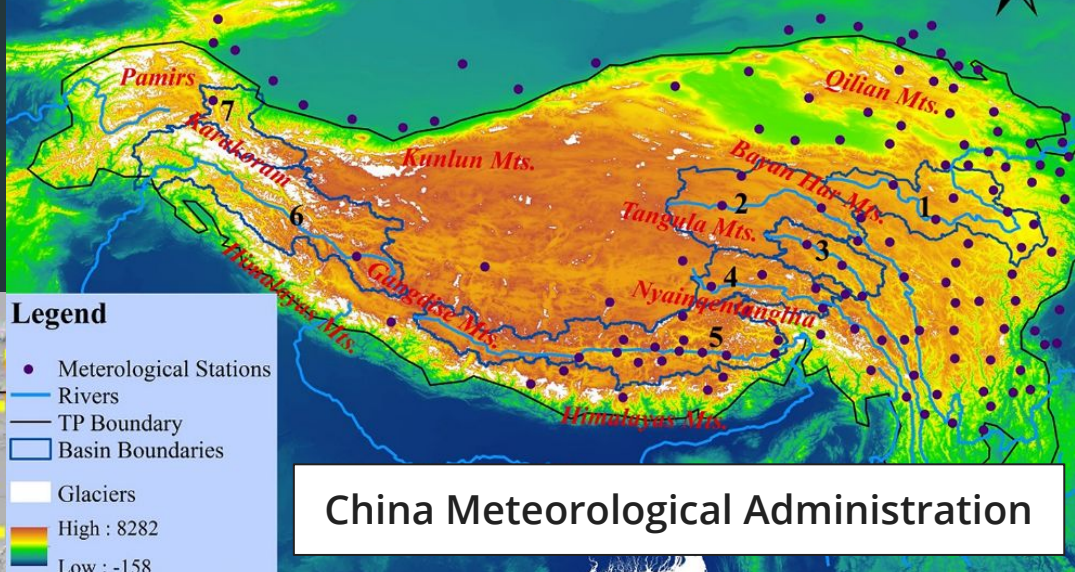
# High Mountain Asia (HMA): Introduction

- The Tibetan Plateau (TP) region is the **world's highest plateau** (average elevation 4000m) → considerable influence on **regional and global climate**. (Orsolini et al., [2019](#))
- Directly sustain the livelihoods of **240 million people** in the mountain and hills of the Hindu Kush Himalaya. (Sharma et al., [2019](#))
- Two distinct climatic regimes:
  - winter **westerly disturbances** → **50 % of the precipitation** over the western Himalaya and Hindu Kush mountains
  - central and eastern Himalayan mountains receiving **major part (up to 80%) of annual precipitation during the Indian summer monsoon** months (June-September). (Bookhagen and Burbank, [2010](#))

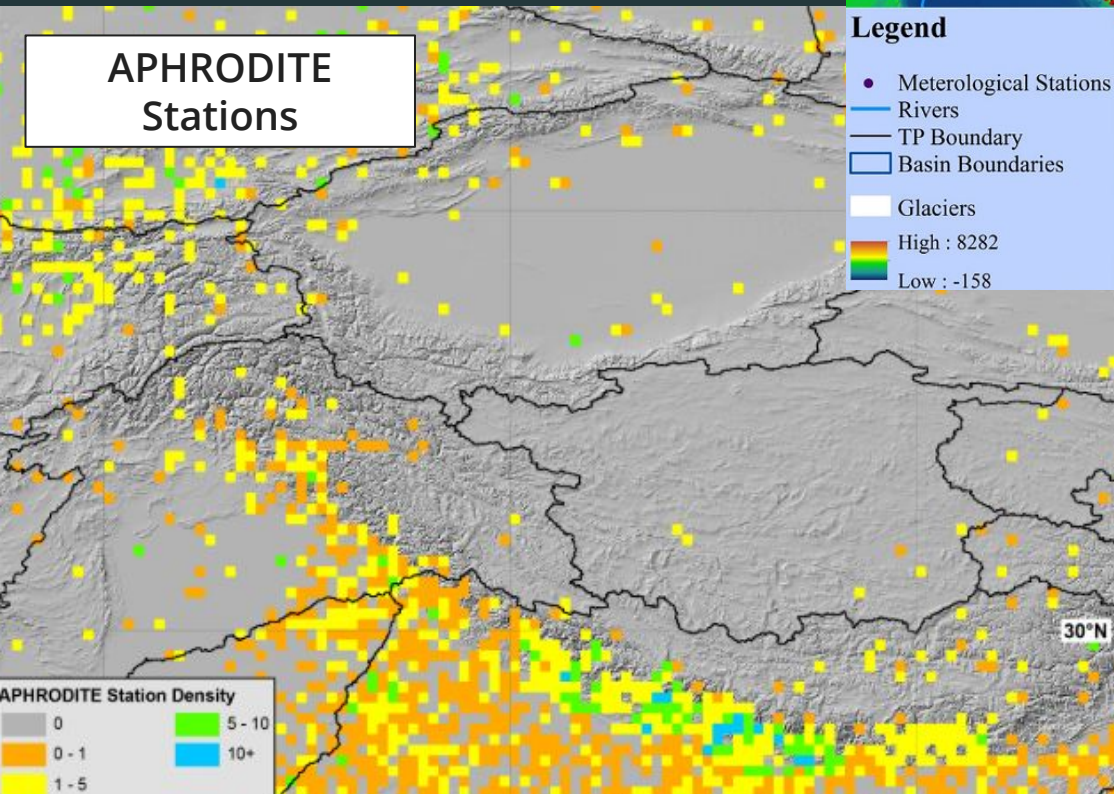


Smith and Bookhagen ([2018](#)), [Fig. 1A](#)

# High Mountain Asia (HMA): station observations



## APHRODITE Stations



## China Meteorological Administration

Li et al. (2018), Fig. 1

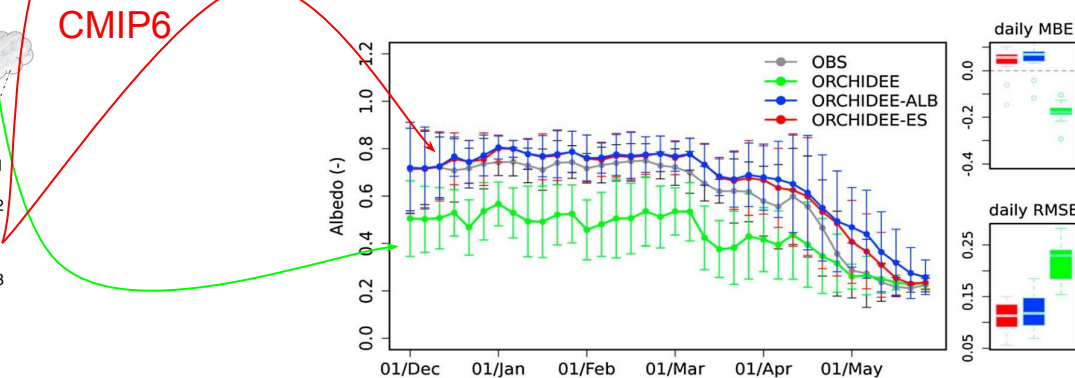
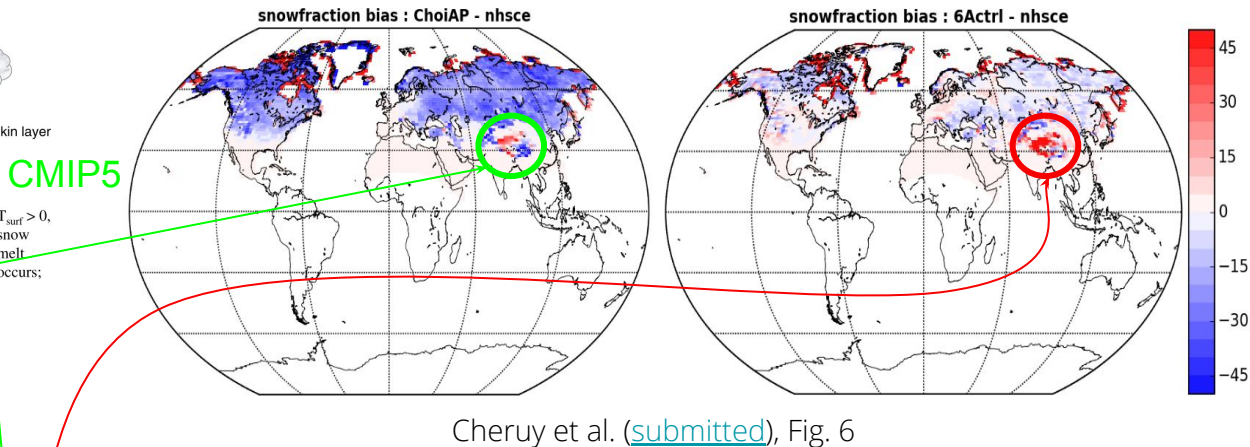
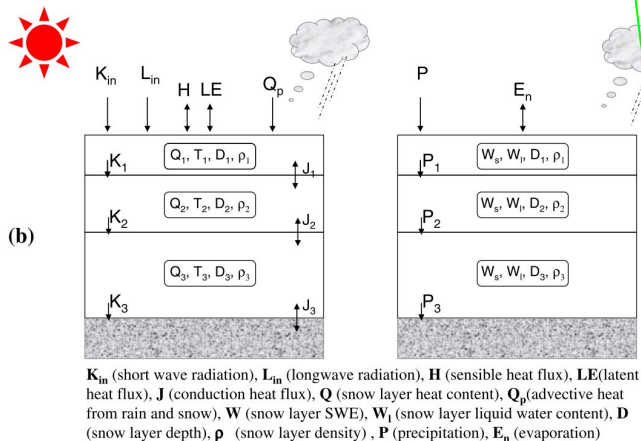
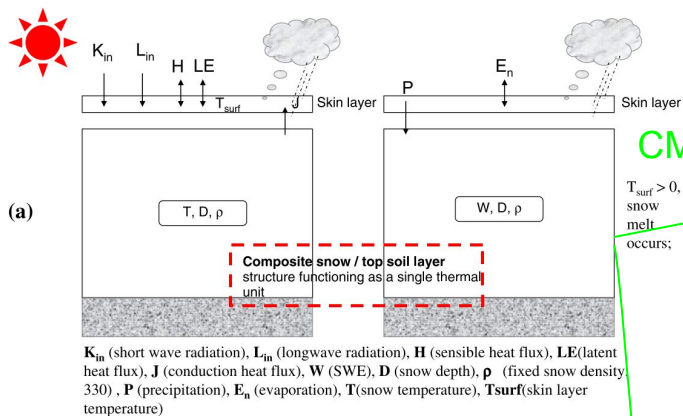
- Illustrates the **low station density** in the core of HMA (Tibetan Plateau)
- The **highest elevations are severely under-represented**
- **Almost exclusively measure rainfall** (there exist very few snow monitoring stations in HMA)

Smith and Bookhagen (2018), Fig. S1



# Snow bias in IPSL model CMIP5 versus CMIP6

WANG ET AL.: ORCHIDEE SNOW MODEL EVALUATION



Wang et al. (2013), Fig. 1

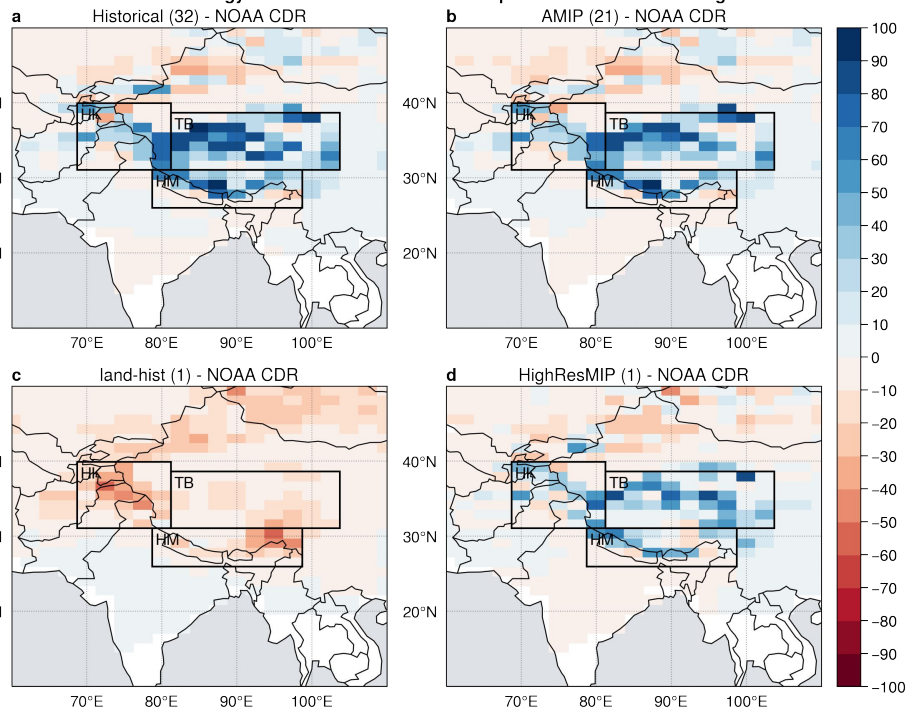
Wang et al. (2013), Fig. 5



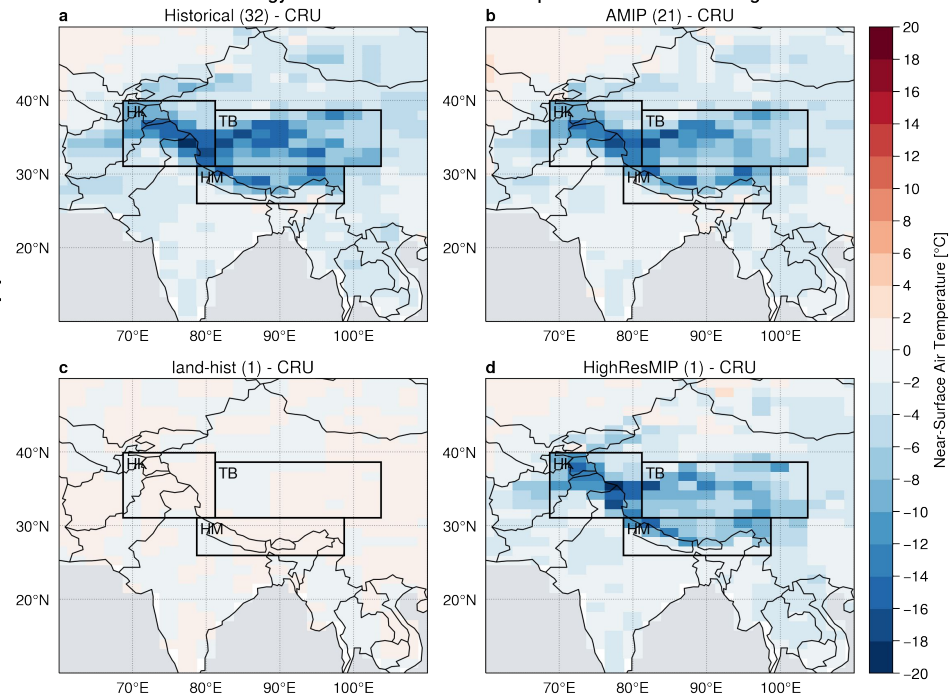
## Snow cover bias

## Temperature bias

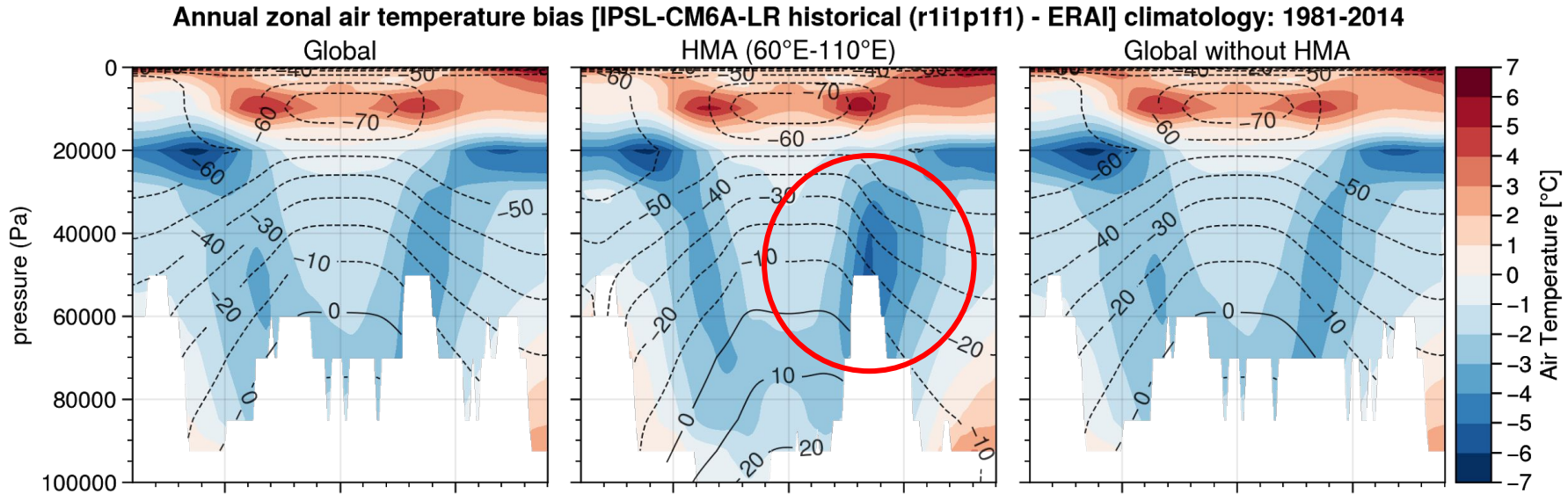
Annual climatology bias: 1981-2014 / Bilinear interpolation towards 143x144 grid



Annual climatology bias: 1981-2014 / Bilinear interpolation towards 143x144 grid



# Air Temperature zonal means bias global versus HMA

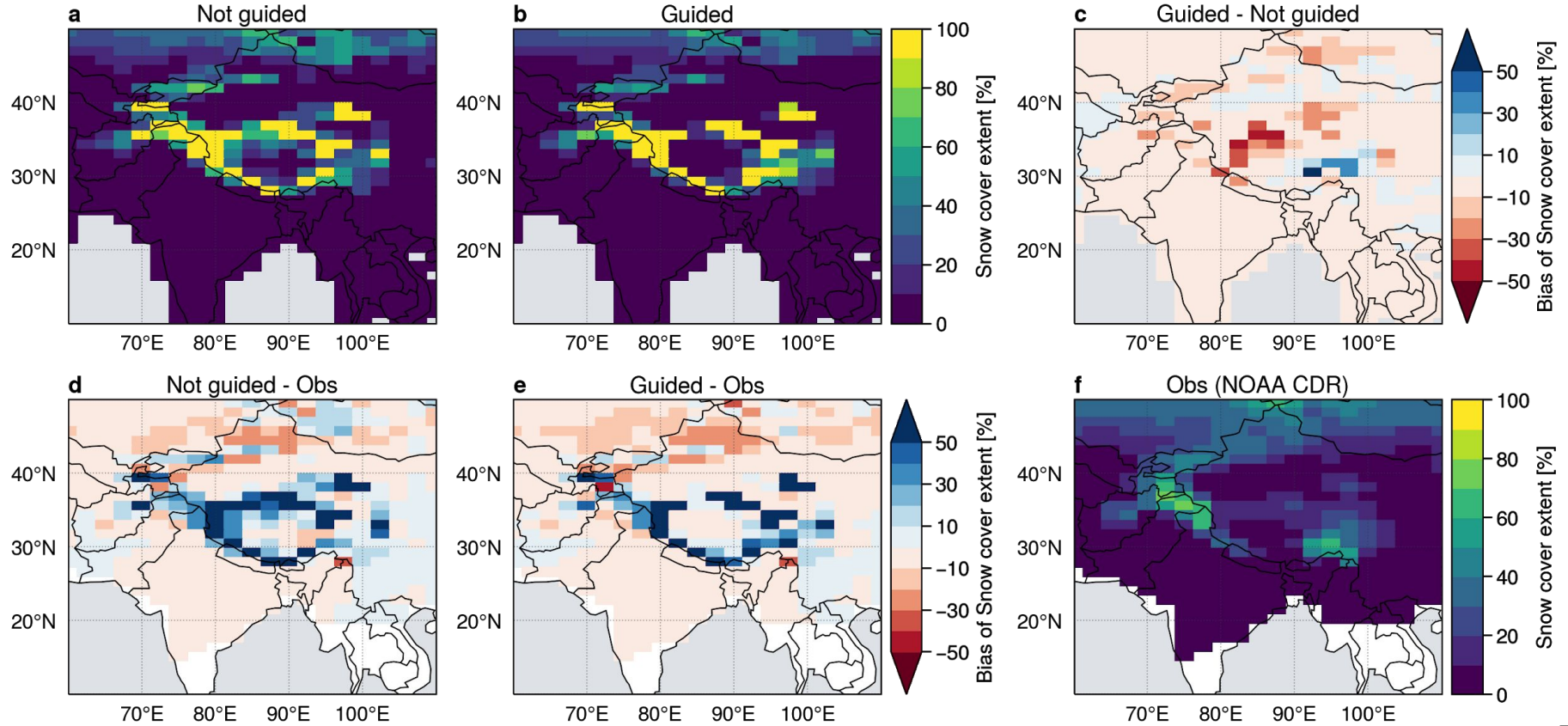


- Cold bias in troposphere and hot bias in stratosphere
- Cold bias of air temperature **not restricted to HMA!**
- HMA seems to **amplify** this bias
- The bias is **reduced in HighResMIP**

Adapted from from Boucher et al., Fig. 3 ([submitted](#))

# Nudged versus not nudged: snow cover\*

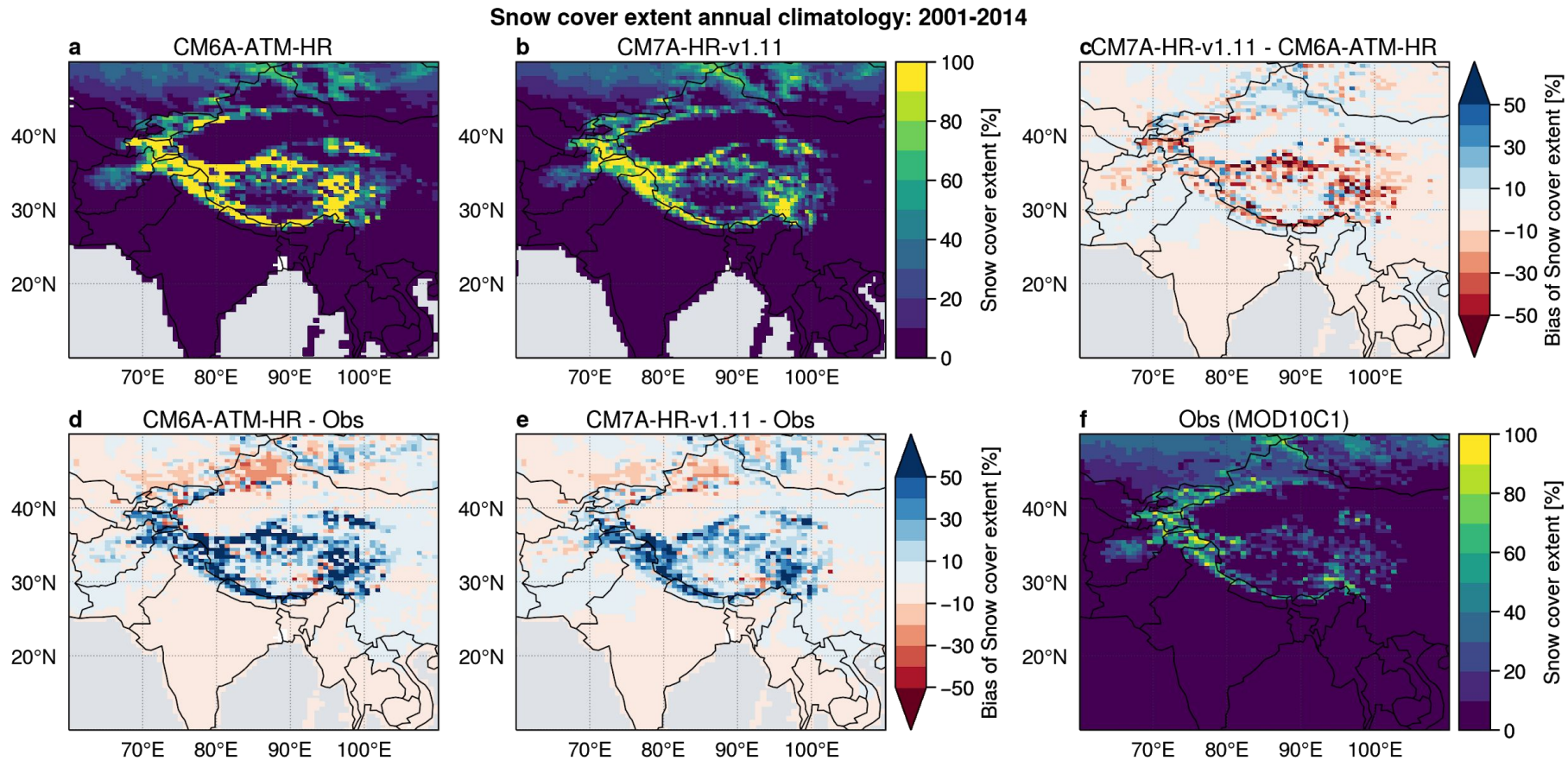
Snow cover extent annual climatology: 1999-2008 (CM6012-LR-amip-G-02)



\* Simulation: Frédérique Cheruy



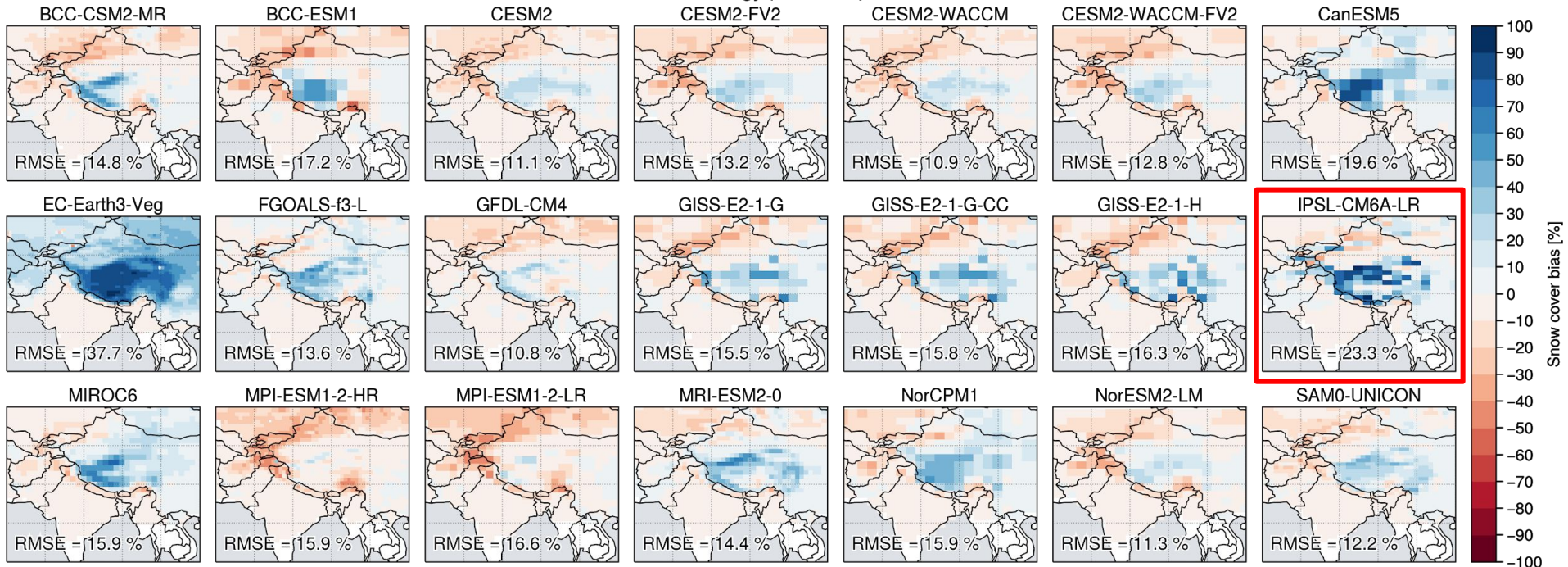
# Dynamico versus HighResMIP: snow cover\*



\* Simulation: Sebastien FROMANG

# CMIP6 other models: snow cover bias

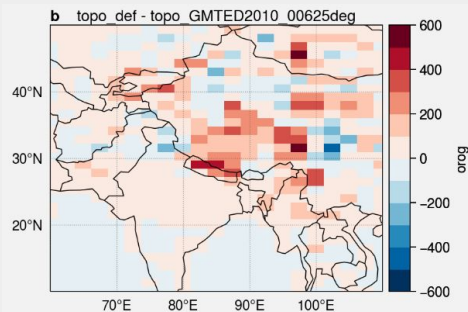
Bias of snow cover annual climatology (1981-2014) versus NOAA CDR





# Different options

## Problem with elevation?



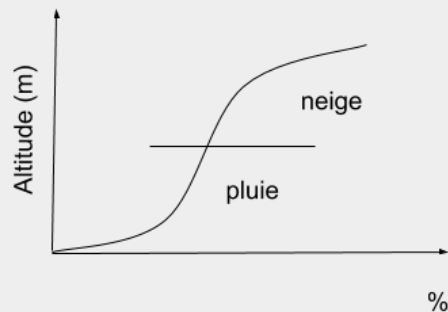
Original file of elevation has **more than 500 m differences** locally!

→ 2 experiments with original and new topographic file in process

See more:

<https://lmdz.lmd.jussieu.fr/utilisateurs/reunion-utilisateurs/2018/jlmdz2018-sepulchre.pdf>

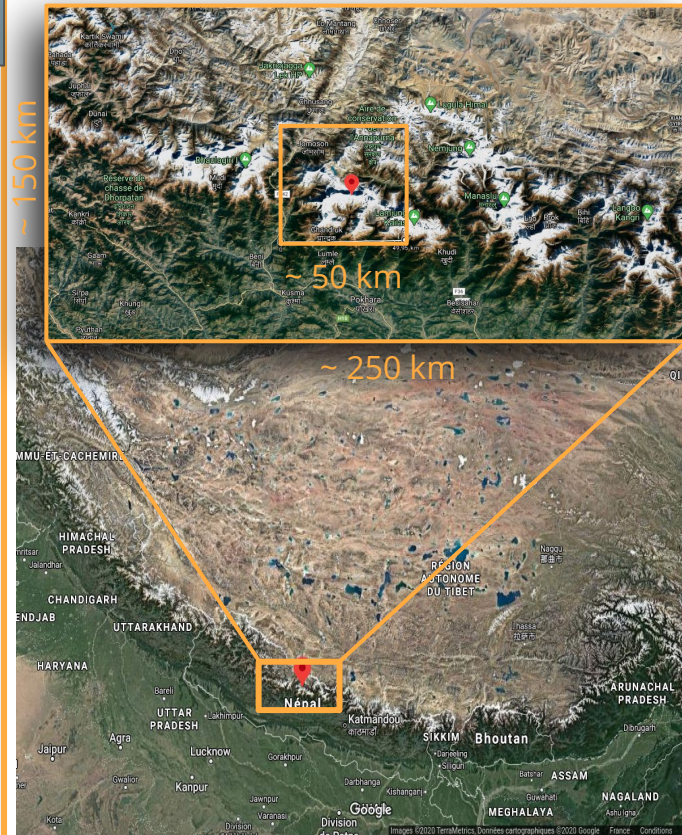
## Problem with subgrid parameterization?



Wrong phase distribution / surface energy budget over complex terrain?

→ Walland and Simmons, [1996](#): SUB-GRID-SCALE TOPOGRAPHY AND THE SIMULATION OF NORTHERN HEMISPHERE SNOW COVER

→ Younas et al., [2017](#): A strategy to represent impacts of subgrid-scale topography on snow evolution in the Canadian Land Surface Scheme





# Conclusions

- Larger **snow cover bias** in CMIP6 than CMIP5 over **HMA**
- land-hist: no bias / AMIP: bias -> **coupled with the atmosphere**
- Possible link with the **cold bias in the troposphere**
- Bias reduced with nudge / higher resolution / dynamico
- Other possible source of the bias:
  - precipitation, albedo, cloud cover, aerosols, boundary layer, surface energy budget
- Future work:
  - CMIP6 multimodel analysis
  - Subgrid topography parameterization in LMDZ

# References

- Smith, T., & Bookhagen, B. (2018). Changes in seasonal snow water equivalent distribution in High Mountain Asia (1987 to 2009). *Science Advances*, 4(1), e1701550. <https://doi.org/10.1126/sciadv.1701550>
- Orsolini, Y., Wegmann, M., Dutra, E., Liu, B., Balsamo, G., Yang, K., ... Arduini, G. (2019). Evaluation of snow depth and snow cover over the Tibetan Plateau in global reanalyses using in situ and satellite remote sensing observations. *The Cryosphere*, 13(8), 2221–2239. <https://doi.org/10.5194/tc-13-2221-2019>
- Sharma, E., Molden, D., Rahman, A., Khatiwada, Y. R., Zhang, L., Singh, S. P., ... Wester, P. (2019). Introduction to the Hindu Kush Himalaya Assessment. In *The Hindu Kush Himalaya Assessment* (pp. 1–16). [https://doi.org/10.1007/978-3-319-92288-1\\_1](https://doi.org/10.1007/978-3-319-92288-1_1)
- Yao, T., Thompson, L., Yang, W., Yu, W., Gao, Y., Guo, X., ... Joswiak, D. (2012). Different glacier status with atmospheric circulations in Tibetan Plateau and surroundings. *Nature Climate Change*, 2(9), 663–667. <https://doi.org/10.1038/nclimate1580>
- Bookhagen, B., & Burbank, D. W. (2010). Toward a complete Himalayan hydrological budget: Spatiotemporal distribution of snowmelt and rainfall and their impact on river discharge. *Journal of Geophysical Research: Earth Surface*, 115(3), 1–25. <https://doi.org/10.1029/2009JF001426>
- Li, C., Su, F., Yang, D., Tong, K., Meng, F., & Kan, B. (2018). Spatiotemporal variation of snow cover over the Tibetan Plateau based on MODIS snow product, 2001-2014. *International Journal of Climatology*, 38(2), 708–728. <https://doi.org/10.1002/joc.5204>
- Mao, J., & Robock, A. (1998). Surface Air Temperature Simulations by AMIP General Circulation Models: Volcanic and ENSO Signals and Systematic Errors. *Journal of Climate*, 11(7), 1538–1552. [https://doi.org/10.1175/1520-0442\(1998\)011<1538:SATSBA>2.0.CO;2](https://doi.org/10.1175/1520-0442(1998)011<1538:SATSBA>2.0.CO;2)

# References

- Lee, D. K., & Suh, M. S. (2000). Ten-year east Asian summer monsoon simulation using a regional climate model (RegCM2). *Journal of Geophysical Research Atmospheres*, 105(D24), 29565–29577. <https://doi.org/10.1029/2000JD900438>
- Gu, H., Wang, G., Yu, Z., & Mei, R. (2012). Assessing future climate changes and extreme indicators in east and south Asia using the RegCM4 regional climate model. *Climatic Change*, 114(2), 301–317. <https://doi.org/10.1007/s10584-012-0411-y>
- Wang, X., Yang, M., Wan, G., Chen, X., & Pang, G. (2013). Qinghai-Xizang (Tibetan) Plateau climate simulation using the regional climate model RegCM3. *Climate Research*, 57(3), 173–186. <https://doi.org/10.3354/cr01167>
- Su, F., Duan, X., Chen, D., Hao, Z., & Cuo, L. (2013). Evaluation of the Global Climate Models in the CMIP5 over the Tibetan Plateau. *Journal of Climate*, 26(10), 3187–3208. <https://doi.org/10.1175/JCLI-D-12-00321.1>
- Boos, W. R., & Hurley, J. V. (2013). Thermodynamic bias in the multimodel mean boreal summer monsoon. *Journal of Climate*, 26(7), 2279–2287. <https://doi.org/10.1175/JCLI-D-12-00493.1>
- Xu, J., Gao, Y., Chen, D., Xiao, L., & Ou, T. (2017). Evaluation of global climate models for downscaling applications centred over the Tibetan Plateau. *International Journal of Climatology*, 37(2), 657–671. <https://doi.org/10.1002/joc.4731>
- Chen, X., Liu, Y., & Wu, G. (2017). Understanding the surface temperature cold bias in CMIP5 AGCMs over the Tibetan Plateau. *Advances in Atmospheric Sciences*, 34(12), 1447–1460. <https://doi.org/10.1007/s00376-017-6326-9>
- Salunke, P., Jain, S., & Mishra, S. K. (2019). Performance of the CMIP5 models in the simulation of the Himalaya-Tibetan Plateau monsoon. *Theoretical and Applied Climatology*, 137(1–2), 909–928. <https://doi.org/10.1007/s00704-018-2644-9>



# References

- Palazzi, E., von Hardenberg, J., & Provenzale, A. (2013). Precipitation in the Hindu-Kush Karakoram Himalaya: Observations and future scenarios. *Journal of Geophysical Research: Atmospheres*, 118(1), 85–100. <https://doi.org/10.1029/2012JD018697>
- Immerzeel, W. W., Wanders, N., Lutz, A. F., Shea, J. M., & Bierkens, M. F. P. (2015). Reconciling high-altitude precipitation in the upper Indus basin with glacier mass balances and runoff. *Hydrology and Earth System Sciences*, 19(11), 4673–4687. <https://doi.org/10.5194/hess-19-4673-2015>
- Boucher, O., Albright, A. L., Aumont, O., Balkanski, Y., Bastrikov, V., Bekki, S., ... Kageyama, M. (submitted). Presentation and evaluation of the IPSL-CM6A-LR climate model. Retrieved from [https://www.lmd.jussieu.fr/~hourdin/PUBLIS/IPSL\\_CM6A\\_LR.pdf](https://www.lmd.jussieu.fr/~hourdin/PUBLIS/IPSL_CM6A_LR.pdf)
- WALLAND, D. J., & SIMMONDS, I. (1996). SUB-GRID-SCALE TOPOGRAPHY AND THE SIMULATION OF NORTHERN HEMISPHERE SNOW COVER. *International Journal of Climatology*, 16(9), 961–982. <http://doi.wiley.com/10.1002/%28SICI%291097-0088%28199609%2916%3A9%3C961%3A%3AAID-IOC72%3E3.0.CO%3B2-R>
- Younas, W., Hay, R. W., MacDonald, M. K., Islam, S. U., & Déry, S. J. (2017). A strategy to represent impacts of subgrid-scale topography on snow evolution in the Canadian Land Surface Scheme. *Annals of Glaciology*, 58(75pt1), 1–10. <https://doi.org/10.1017/aog.2017.29>
- Wang, T., Ottlé, C., Boone, A., Ciais, P., Brun, E., Morin, S., ... Peng, S. (2013). Evaluation of an improved intermediate complexity snow scheme in the ORCHIDEE land surface model. *Journal of Geophysical Research: Atmospheres*, 118(12), 6064–6079. <https://doi.org/10.1002/jgrd.50395>
- Cheruy, F., Ducharne, A., Hourdin, F., Musat, I., Vignon, E., Gastineau, G., ... Wang, F. (n.d.). Improved near surface continental climate in IPSL-CM6A-LR by combined evolutions of atmospheric and land surface physics.

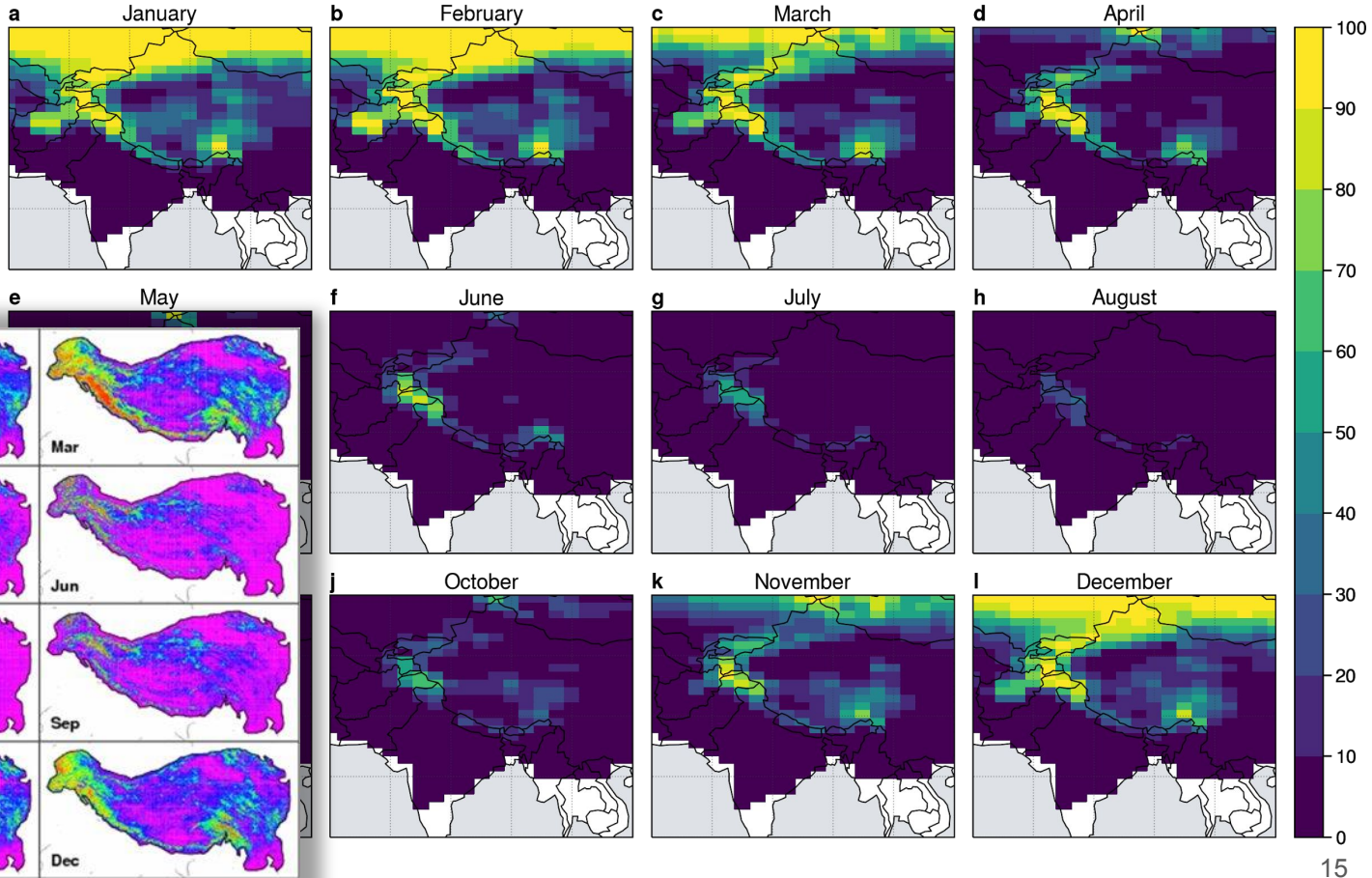
# Monthly snow cover climatologies (from satellite observations)

[NOAA Climate Data Record \(CDR\) of Northern Hemisphere \(NH\) Snow Cover Extent \(SCE\), Version 1 \(1981-2014\)](#)

[MODIS/Terra Snow Cover 8-Day L3 Global 0.05Deg CMG, Version 6 \(2001-2014\)](#)

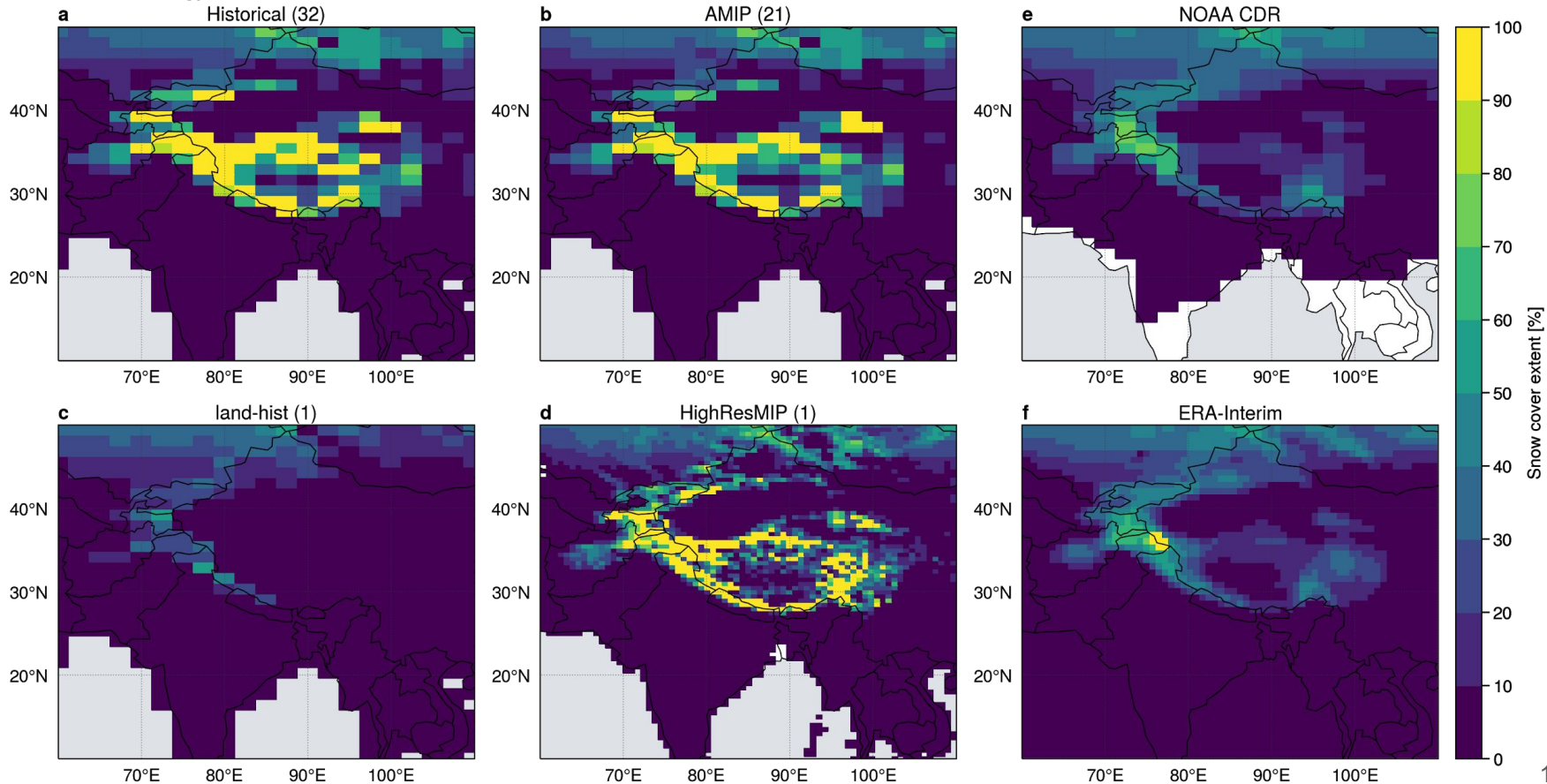
Li et al. (2018), Fig. 2

Monthly averaged snow cover 1981-2014 (NOAA Climate Data Record (CDR) Version 1)



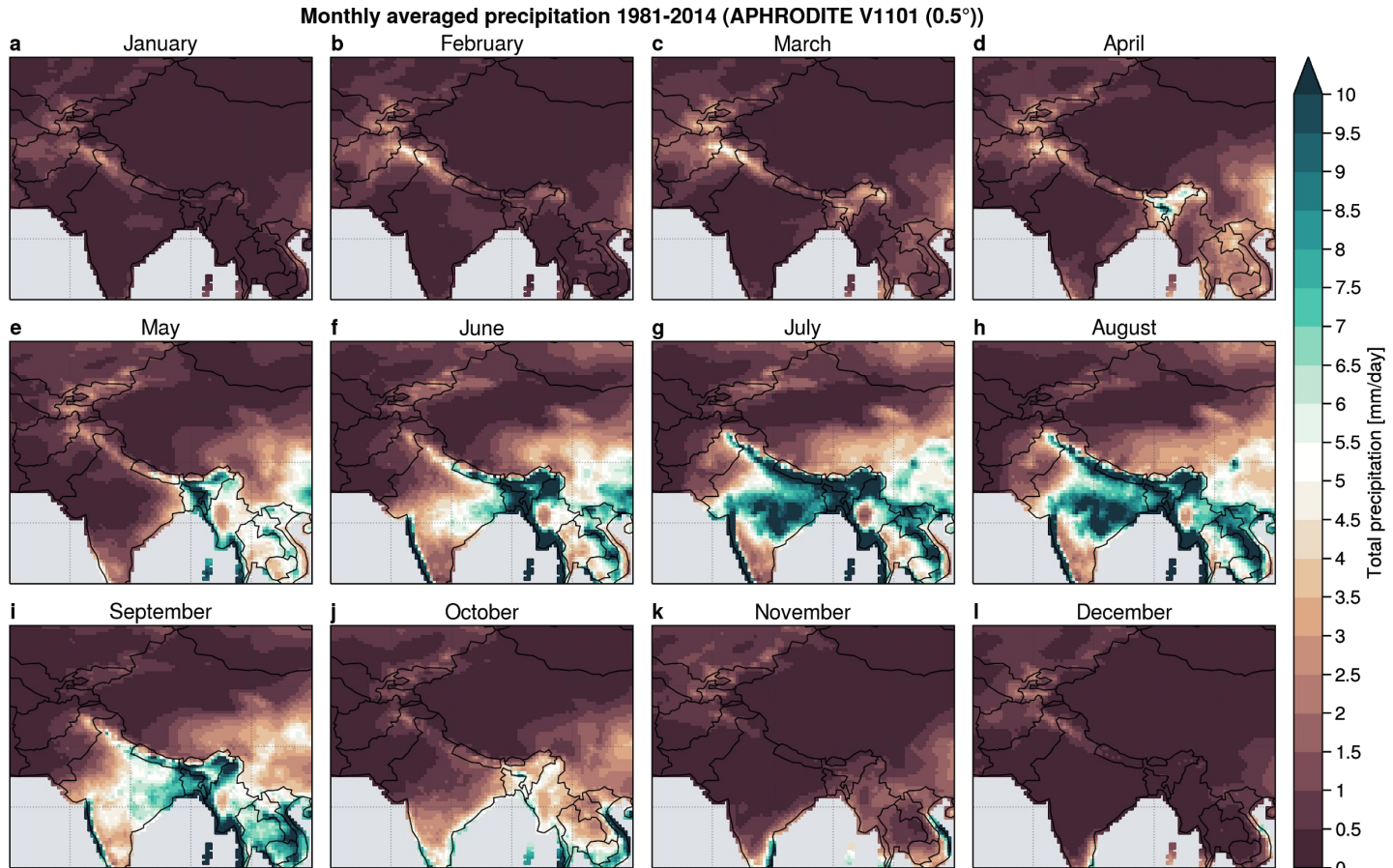
# Snow cover climatology (1981-20014)

Annual climatology: 1981-2014 / Models: IPSL-CM6A-LR (143x142), IPSL-CM6A-ATM-HR (361x512) / Observation: NOAA Climate Data Record (CDR) Version 1

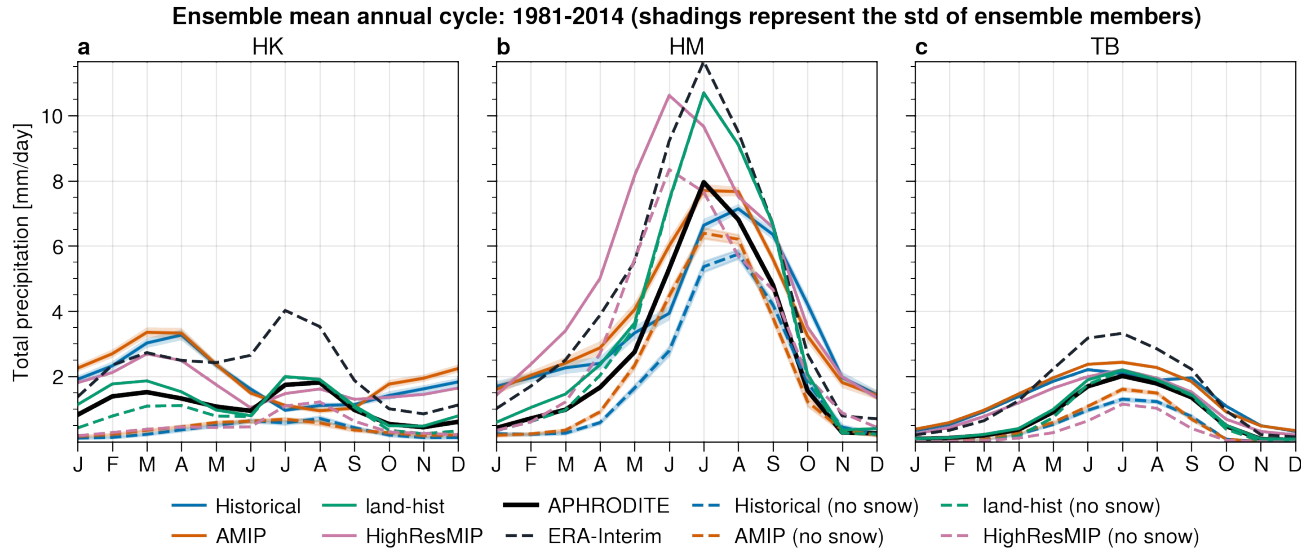




# Precipitation climatologies (APHRODITE)



# Precipitation: annual cycles



*“ERA-Interim strongly overestimates precipitation compared to the other data sets, and so does EC-Earth in the HKK domain, probably owing to the fact that both ERA-Interim and EC-Earth provide total precipitation while the in situ station and satellite data, as well as their combinations, have difficulties in detecting the snow component of precipitation. The analysis of liquid-only precipitation in ERA-Interim and EC-Earth generally gives results closer to the observations.”*

(Palazzi et al., [2013](#))



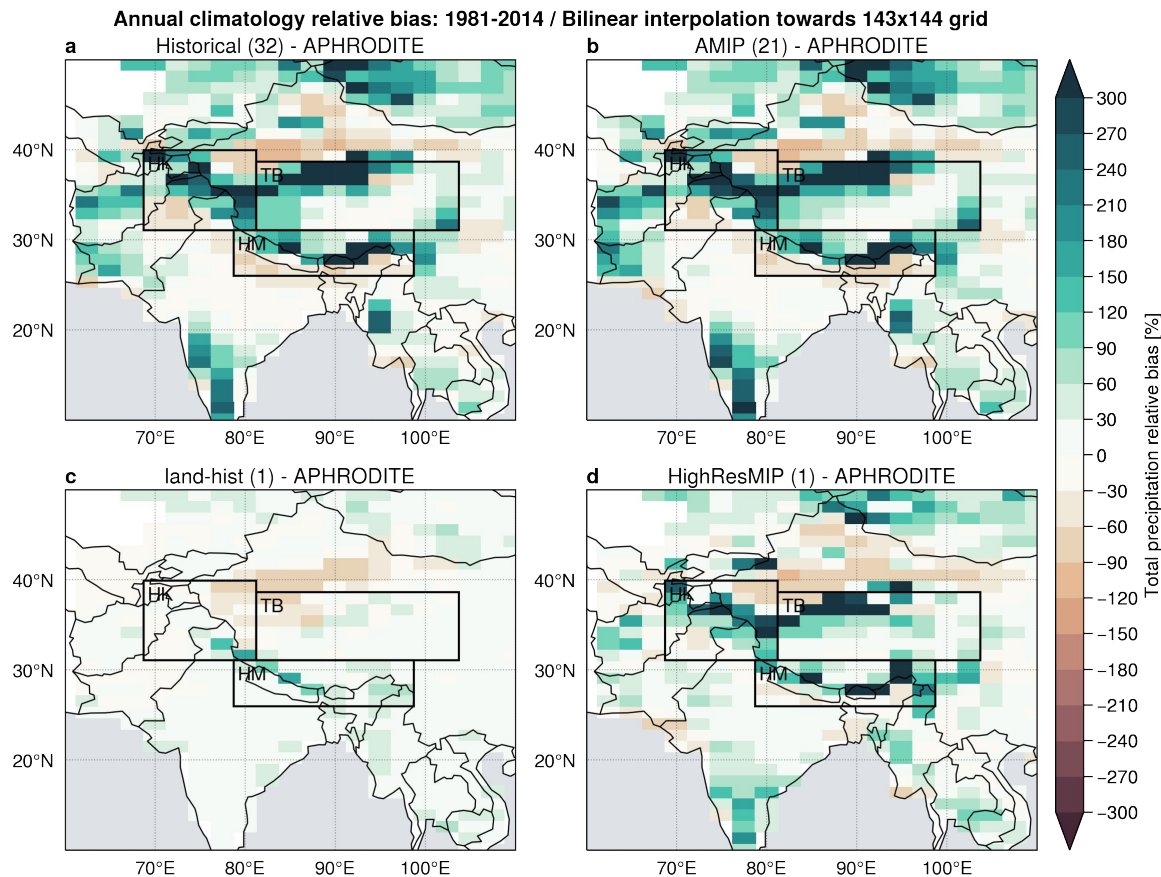
# IPSL-CM6A-LR: Historical, AMIP, land-hist / IPSL-CM6A-ATM-HR bias

Total precipitation **relative bias**  
(versus stations observations)

**BUT...** (see ERAI)

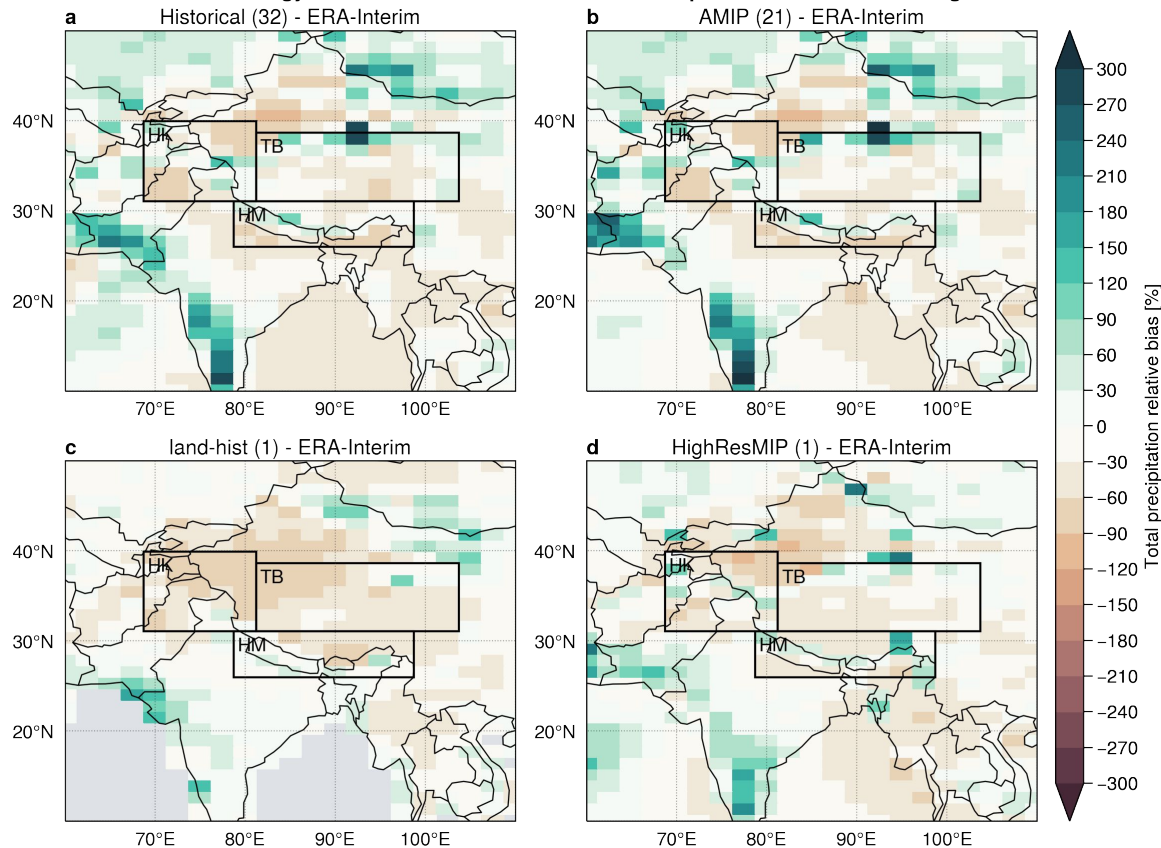
All in situ stations and satellite data tends to underestimate the snow component!

- The in situ station and satellite data, as well as their combinations, have **difficulties in detecting the snow** component of precipitation. (Palazzi et al., [2013](#))
- An independent validation with observed river flow confirms that the water balance can indeed only be closed when **the high altitude precipitation on average is more than twice as high and in extreme cases up to a factor of 10 higher than previously thought.** (Immerzeel et al., [2015](#))



# IPSL-CM6A-LR: Historical, AMIP, land-hist / IPSL-CM6A-ATM-HR bias

Annual climatology relative bias: 1981-2014 / Bilinear interpolation towards 143x144 grid



Total precipitation **relative bias**  
(versus reanalysis)

**BUT...**

“ERA-Interim strongly overestimates precipitation compared to the other data sets, and so does EC-Earth in the HKK domain, probably owing to the fact that both ERA-Interim and EC-Earth provide total precipitation while the in situ station and satellite data, as well as their combinations, have difficulties in detecting the snow component of precipitation. The analysis of liquid-only precipitation in ERA-Interim and EC-Earth generally gives results closer to the observations.” (Palazzi et al., [2013](#))

[Back](#)

# “Cold bias” over Tibetan Plateau

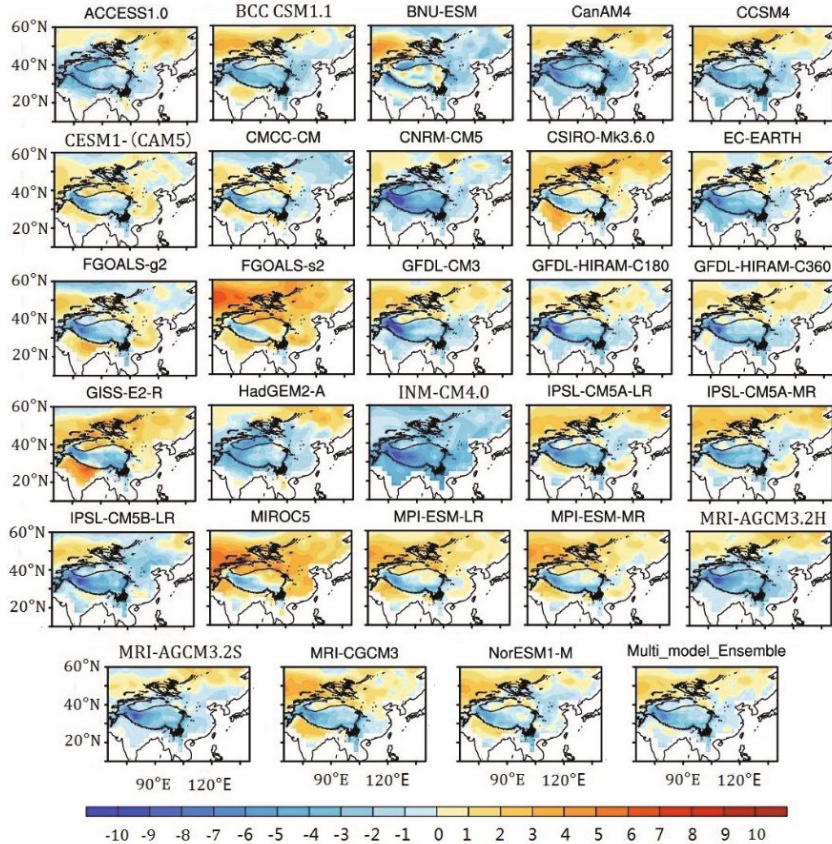
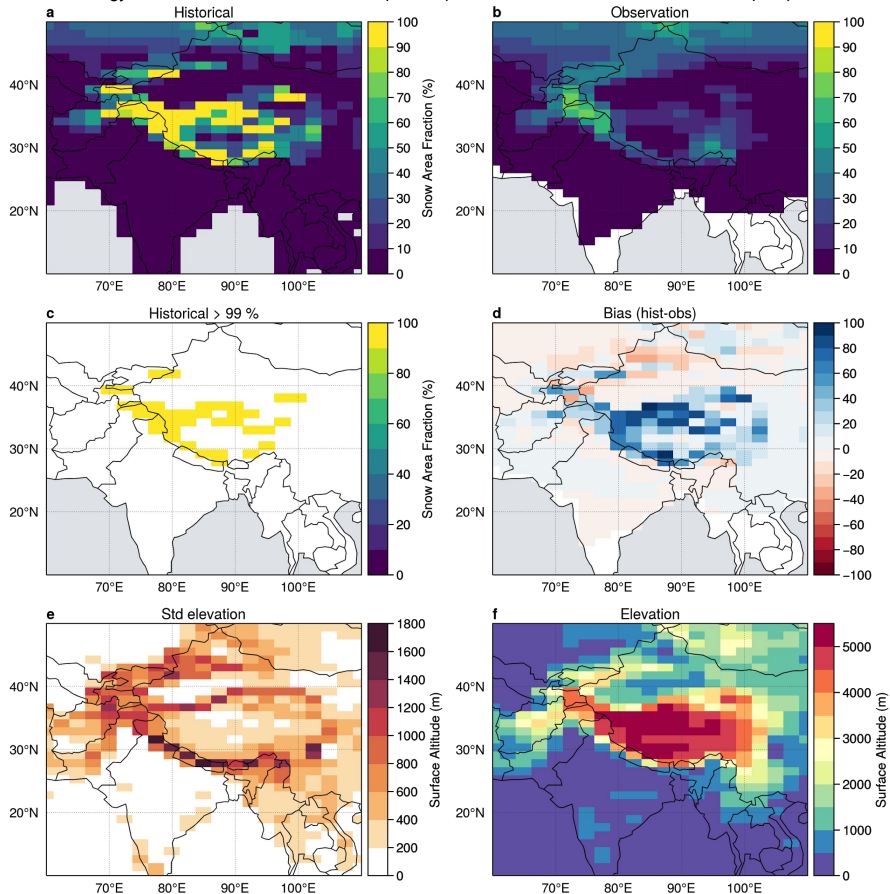


Fig. 2. Annual mean  $T_{as}$  ( $^{\circ}\text{C}$ ) differences between various models and CRU data averaged during 1979–2005. All air temperature values in the models have been corrected to real elevation at a resolution of  $2.5^{\circ} \times 2.5^{\circ}$ .

- The large **cold biases** are located in the **mountainous areas**, such as the Rocky Mountains, the **Tibetan Plateau**, the Andes, Greenland, and Antarctica, and seem to be proportional to the topographic height. (Mao and Robock, [1998](#) — First AMIP experiments)
- These cold biases are partly attributable to the simulation of **excess precipitation** in these regions (Lee & Suh, [2000](#)). The **lack of high-elevation observation stations in the CRU data** may also be partly responsible for the apparent cold bias of the model (Gu et al., [2012](#)). (Wang et al., [2013](#) — regional climate model RegCM)
- This feature may imply a common **deficiency in the representation of snow-ice albedo** in the diverse models. It appears that the **systematic bias** and the **significant problems over the mountain regions** (e.g., the Tibetan Plateau) **still remain in the CMIP5 models**. (Su et al., [2013](#))
- **GCMs show predominant cold biases in T500**, which may be caused by penetration of dry and cold air from the deserts of western Asia due to an **overly smoothed representation of topography** west of the TP (Boos and Hurley, [2013](#)). (Xu et al., [2017](#) — CMIP5)
- The results suggest that improvements in the **parameterization of the area of snow cover**, as well as the boundary layer, and hence **surface turbulent fluxes**, may help to reduce the cold bias over the TP in the models. (Chen et al., [2017](#) — surface energy budget CMIP5)
- Others: Salunke et al. ([2019](#)), etc.

# Link with orography?

Annual climatology: 1981-2014 / Models: IPSL-CM6A-LR (143x142) / Observation: NOAA Climate Data Record (CDR) Version 1

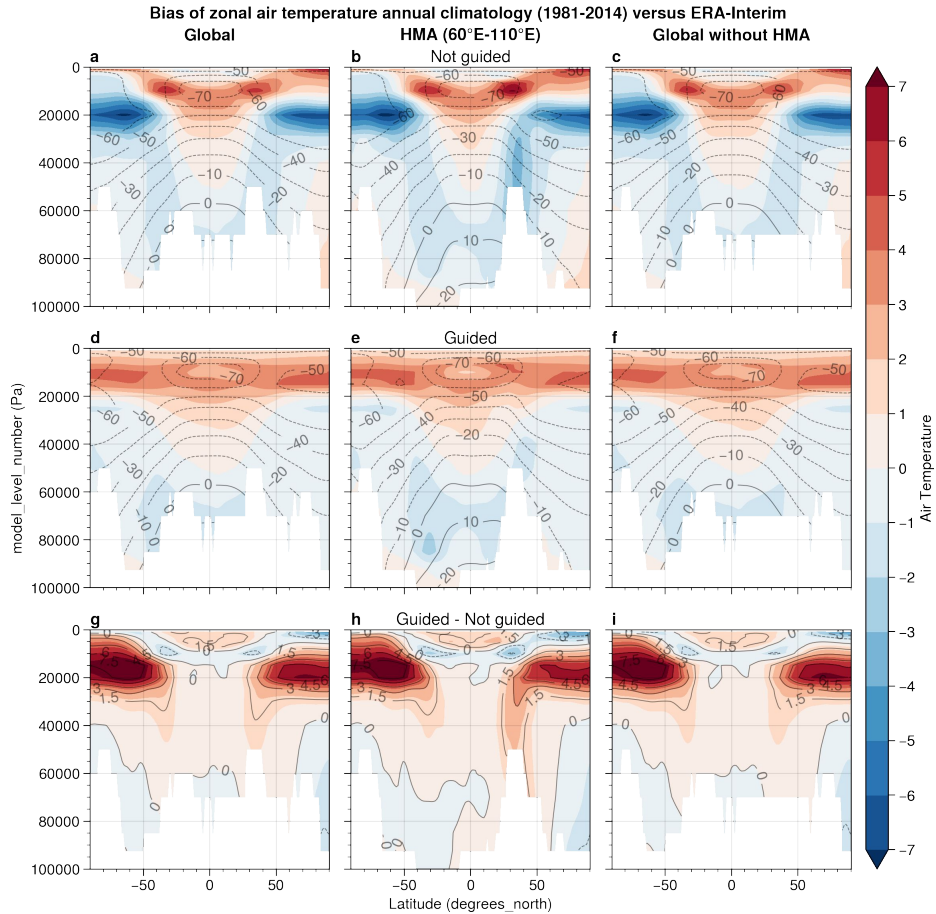


- Some cells stays at 100% of snow cover all the time!
- Seems related with elevation
- No obvious link with the standard deviation of elevation... maybe more for higher resolution



# Nudged versus not nudged

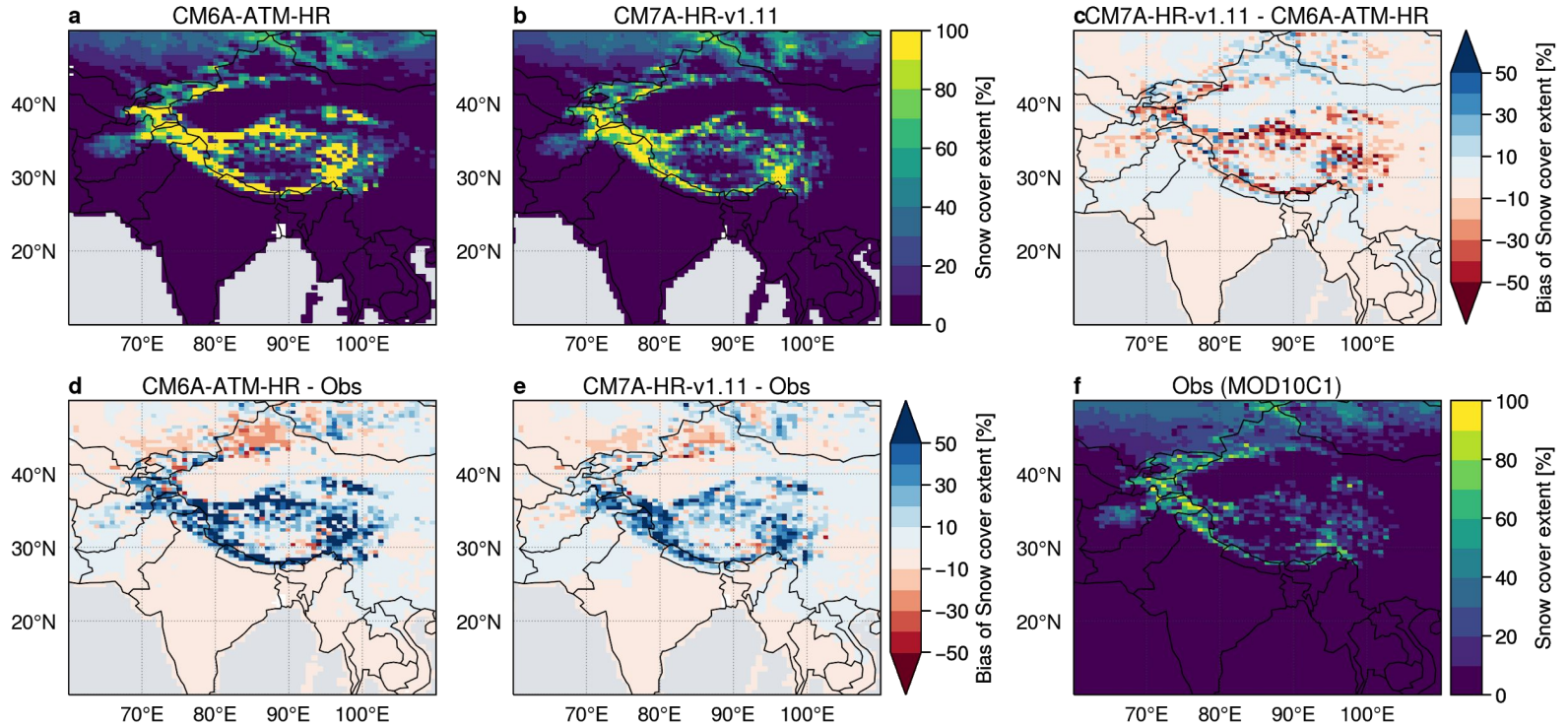
More:  
<https://docs.google.com/document/d/1SphVviaGEyB9KQbkgC4U2hC-qraRfaE-ojLayZcDGPU/edit?usp=sharing>





# Dynamico

Snow cover extent annual climatology: 2001-2014



More: <https://docs.google.com/document/d/1CIIEB5U824pH9O3Tshljc1djtttWfU4reDSbAV4c/edit?usp=sharing>